

## Product Description

### SPECIFICATIONS

4-season safety cover that complies with the **AFNOR regulation NF P90-308 December 2013**



- **Manoeuvre** :
  - Wireless control with maintained contact
  - Wired control with 3 buttons
  - Rechargeable by 2 solar panels 12v/ 12W/ 0.78Ah of 2 batteries 12V - 5,5 Ah (except indoor pool = on power supply)
  - Ratchet spanner only in case of an electrical failure

- **Membrane** : PVC pre-stressed membrane

- **Belt** : Polyurethane with stainless steel cables



- **Méchanical** : All the metallic parts involved in the security are in anodized aluminium and 316 stainless steel

- **Rails** : Anodized aluminium

- **Casing** : Polyester powder-coated aluminium, matt finished of **Ral colour 7037** (standard)

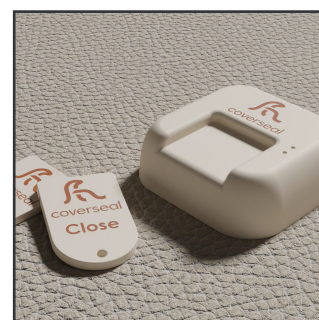
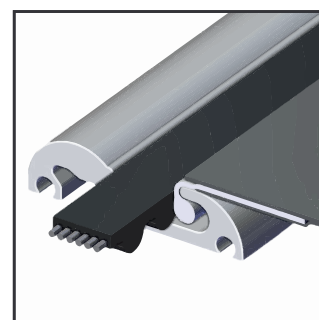
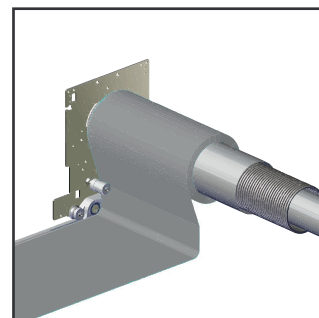


- **Length** : min 2 meters -> max 28 meters

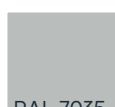
- **Width** : min 2 meters -> max 12 meters (depending on the length of the cover)<sup>1</sup>



- **Speed** : Closing/opening time : 60 seconds for a length of 13 meters

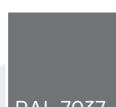


### AVAILABLE COLOURS OF THE MEMBRANE



RAL 7035

Light Grey



RAL 7037

Dust Grey



RAL 6026

Opal Green



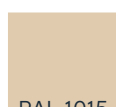
RAL 5002

ultramarine Blue



RAL 5015

Sky Blue



RAL 1015

Light Ivory



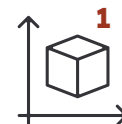
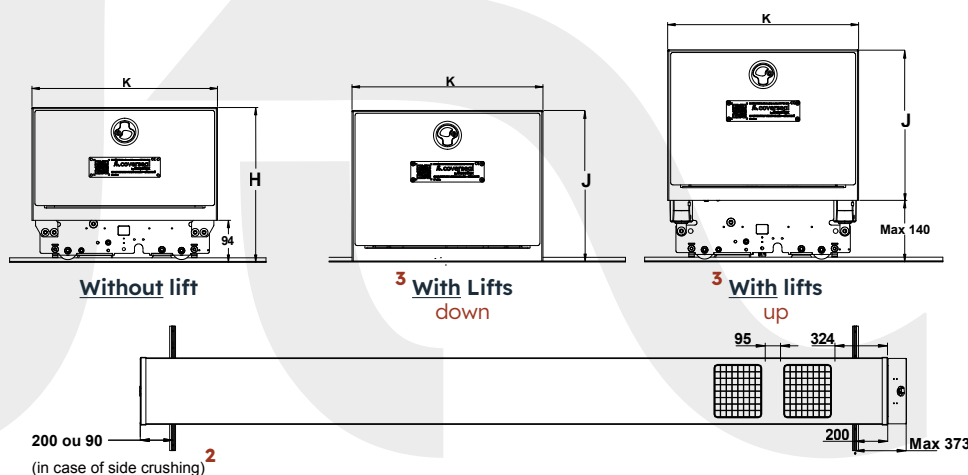
RAL 9005

Pure Black

### AVAILABLE OPTIONS

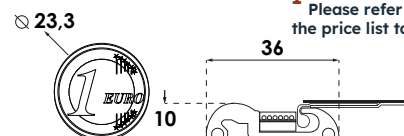
- The casing is available in all RAL K7 Classic paints except for fluo and metallic paints.
- All-terrain rail (RTT) 72,0 mm x 10,6 mm (unregular surface or low density)
- 2 solar panels additional
- Mechanical closing sensor
- Charging station for indoor pool
- Side Crushing<sup>2</sup>
- Lift<sup>3</sup> in case of obstacle and low clearance

### MEASURES (in mm)



H	J	K
348	333	416
423	418	416
508	483	471

<sup>1</sup> Please refer to the price list table



Technical Data Sheet: Automatic Model

Cover 102 in compliance with the Afnor NF P90-308 standard of December 2013 - LNE certified

afnor



coverseal